

A5L

SELECT



INCLUDED ON ALL A SERIES

- JetPak Therapy System®
- Comfort-Tested Seating
- Simplicity® Filtration System
- Premium Touch Screen Control
- Exterior Safety Lighting
- Durable 3-Layer Spa Shell
- Wood-Free EnduraFrame™
- Solid ABS EnduraBase™
- High-Density Full-Foam Insulation
- Patio Performance™ Fabric Cover

SELECT TRIM PACKAGE FEATURES

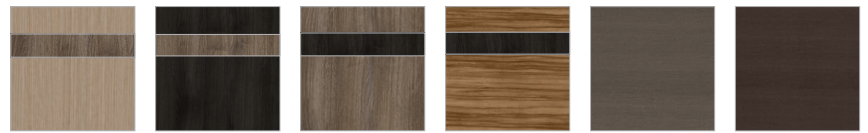
- Select Premium 2-Tone Exterior
- Select Premium Tungsten Metallic Jet Bezels
- Select Premium Headrest Lighting
- Premium Headrests
- Premium Water Feature
- Premium Lighting
- Premium JetPak Count
- Premium 3-button Auxiliary Controls

INDIVIDUAL OPTIONS

- A Series Premium Audio System
- CloudControl 2™ WiFi Module
- EOS™ O3 Enhanced Ozone System
- WellSpring™ Ozone System
- WellSpring™ Dedicated Filtration Pump
- FROG® @ease® Water Care System
- Natural Mineral Cartridge
- Covermate I™ Cover Lifter
- Covermate III™ Cover Lifter
- Element Step
- Premium A Series Step
- Premium Non-Slip Aquatic Surface Package
- 120V~15A GFCI Option

COLOR PROFILES

Exterior



Aspen/
Timber
Premium

Ebony/
Timber
Premium

Timber/
Ebony
Premium

Lodge/
Ebony
Premium

Coastal
Grey
Standard

Woodland
Brown
Standard

Interior



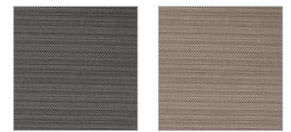
Almond

Mist

Platinum

Snow

Cover



Dusk

Dove

SPA SPECS

AVAILABLE SEATS	3
THERAPY JET PUMPS	1
PREMIUM JETPAK SEATS	3
DIMENSIONS	7' x 5' 8" x 2' 78" 2.13m x 1.72m x .81m
WATER CAPACITY	202 gal / 765 L
DRY WEIGHT	639 lbs / 290 kg
FILLED WEIGHT	3035 lbs / 1377 kg



Scan the QR code to design your custom Bullfrog Spa today!

bullfrog
spas